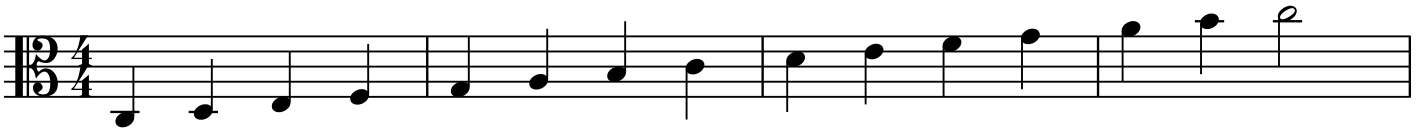


C Major Scales for Viola



The image displays a musical score for two staves, repeated six times. Each system consists of two staves joined by a brace on the left. The top staff of each system begins with a treble clef and a common time signature (C). The music is written in a single melodic line, featuring a variety of note values including quarter, eighth, and sixteenth notes, as well as rests. The bottom staff of each system begins with a bass clef and a common time signature (C). The music is written in a single melodic line, mirroring the top staff's rhythm and pitch contour. The two staves are designed to be played together, likely by two different instruments or voices. The notation is clear and legible, with standard musical symbols and a clean layout.