

High 3rd Finger Study Sheets

H. Figi

Pentatonic A major scale (high 3rd)

Musical notation for the Pentatonic A major scale (high 3rd) in 4/4 time. The scale is written on a single staff in treble clef with a key signature of one sharp (F#). The notes are A4, B4, C#5, D5, and E5. The first two measures are marked with a '3' above them, indicating a triplet of eighth notes.

A major Twinkle (high 3rd)

Musical notation for the A major Twinkle (high 3rd) in 4/4 time. The scale is written on a single staff in treble clef with a key signature of one sharp (F#). The notes are A4, B4, C#5, D5, and E5. The last two measures are marked with a '3' above them, indicating a triplet of eighth notes.

Musical notation for the A major Twinkle (high 3rd) in 4/4 time. The scale is written on a single staff in treble clef with a key signature of one sharp (F#). The notes are A4, B4, C#5, D5, and E5. The first and last measures are marked with a '3' above them, indicating a triplet of eighth notes.

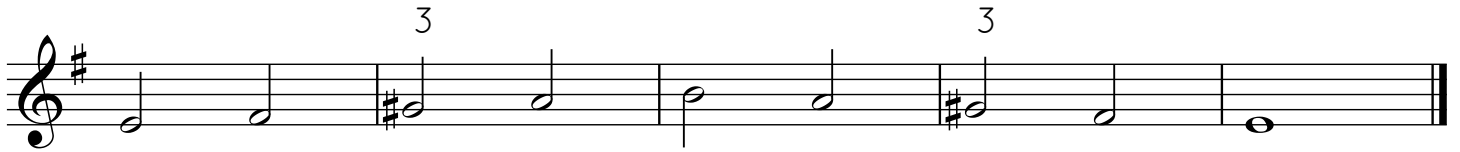
Musical notation for the A major Twinkle (high 3rd) in 4/4 time. The scale is written on a single staff in treble clef with a key signature of one sharp (F#). The notes are A4, B4, C#5, D5, and E5. The last two measures are marked with a '3' above them, indicating a triplet of eighth notes.

A major Mary Had a Little Lamb (high 3rd)

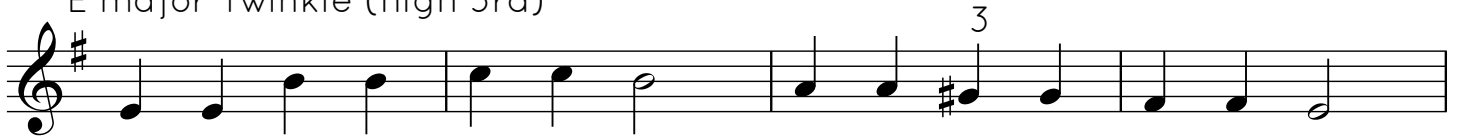
Musical notation for the A major Mary Had a Little Lamb (high 3rd) in 4/4 time. The scale is written on a single staff in treble clef with a key signature of one sharp (F#). The notes are A4, B4, C#5, D5, and E5. The first, second, and fourth measures are marked with a '3' above them, indicating a triplet of eighth notes.

Musical notation for the A major Mary Had a Little Lamb (high 3rd) in 4/4 time. The scale is written on a single staff in treble clef with a key signature of one sharp (F#). The notes are A4, B4, C#5, D5, and E5. The first, second, and fourth measures are marked with a '3' above them, indicating a triplet of eighth notes.

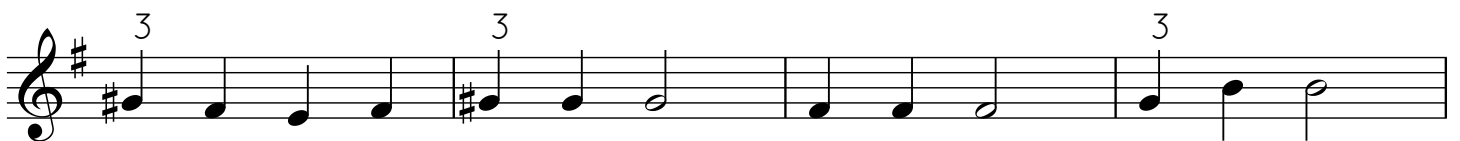
Pentatonic E major scale (high 3rd)



E major Twinkle (high 3rd)



E major Mary Had a Little Lamb (high 3rd)



Pentatonic B major scale (high 3rd)



B major Twinkle (high 3rd)

Musical notation for the B major Twinkle (high 3rd). The piece is written on three staves in treble clef with a key signature of one sharp (F#). The melody consists of eighth notes: B2, C3, D3, E3, F#3, G3, A3, B3. The first and fifth notes (B2 and F#3) are marked with a '3' above them, indicating a triplet of eighth notes.

B major Mary Had a Little Lamb (high 3rd)

Musical notation for the B major Mary Had a Little Lamb (high 3rd). The piece is written on two staves in treble clef with a key signature of one sharp (F#). The melody consists of eighth notes: B2, C3, D3, E3, F#3, G3, A3, B3. The first and fifth notes (B2 and F#3) are marked with a '3' above them, indicating a triplet of eighth notes.